

Belmont Packaging, AG/CAD and Abaca work in partnership to accelerate the design and approval process

In what is becoming a bit of a habit, Belmont Packaging's MD Sean Moloney has again led the introduction of best practice to the UK packaging industry, this time by tempting AG/CAD and Abaca to develop links between their two systems to minimise admin and the risk of mistakes through double entry of the same information. With Abaca already able to link up to all major UK sheet feeders for sheet board order entry and invoicing, this is another example of Abaca's commitment to lower admin costs.

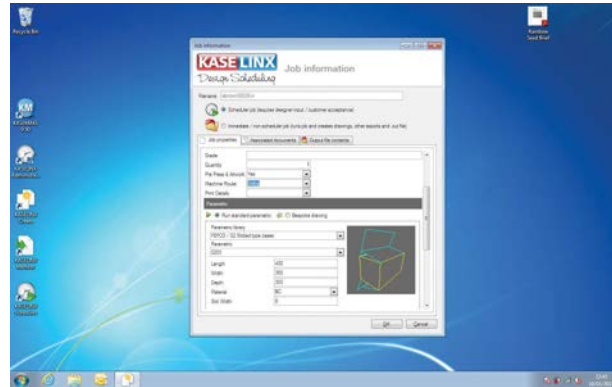
Belmont Packaging has also adopted AG/CAD's KASELINX Design Scheduling and KASEWEB online approval software.

Sean reflects: *"We went live in mid-February and since we raise about 120 new jobs a month it's already saved us a phenomenal amount of time. We now raise a spec only once in the Abaca business system and then press a button to migrate its details into our AGICAD design software."*

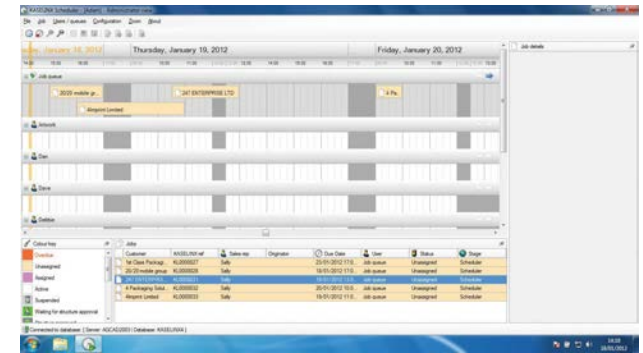
At this point our design team can begin to prioritise, assign, schedule and track the status of new design, artwork and sample requests. The skills that make a great creative designer don't always lend themselves to an organised mindset...this software functionality ensures that we can have the best of both worlds by giving Designers the tools to help them to manage themselves and their team.

Better still, our customers have the ability to log on and approve their designs and artwork online – which helps to improve our lead time for new specs."

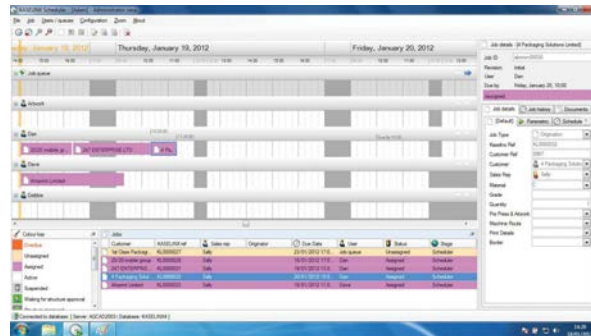
For further information please contact Sean Moloney on sean.moloney@belmontpackaging.co.uk



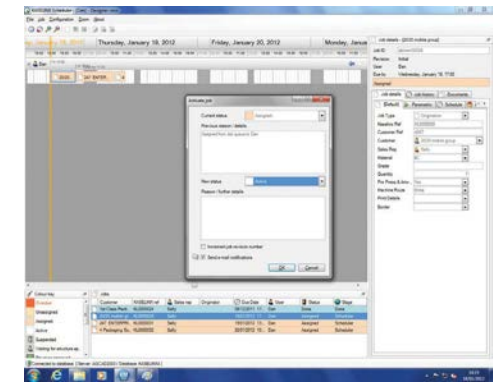
The spec is readily created



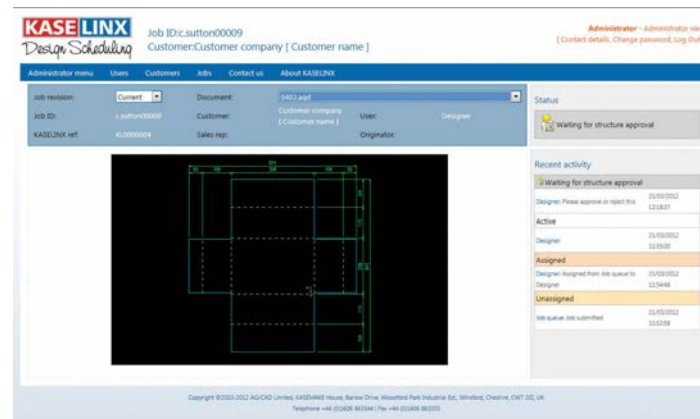
Spec comes into Scheduler Job Queue



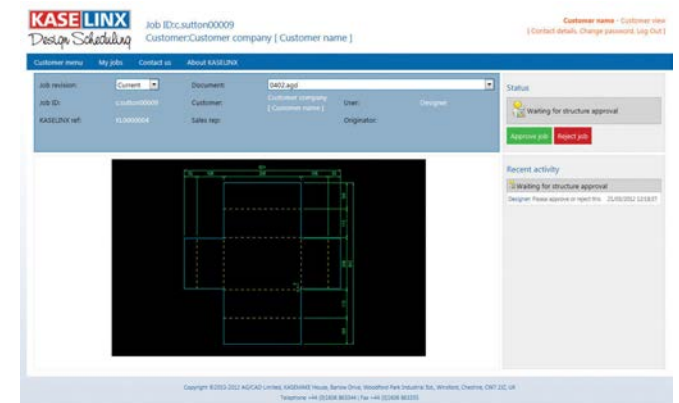
Prioritise, assign, schedule and track your active jobs



Then activate it in KASEMAKE



View designs online



Online approval screen